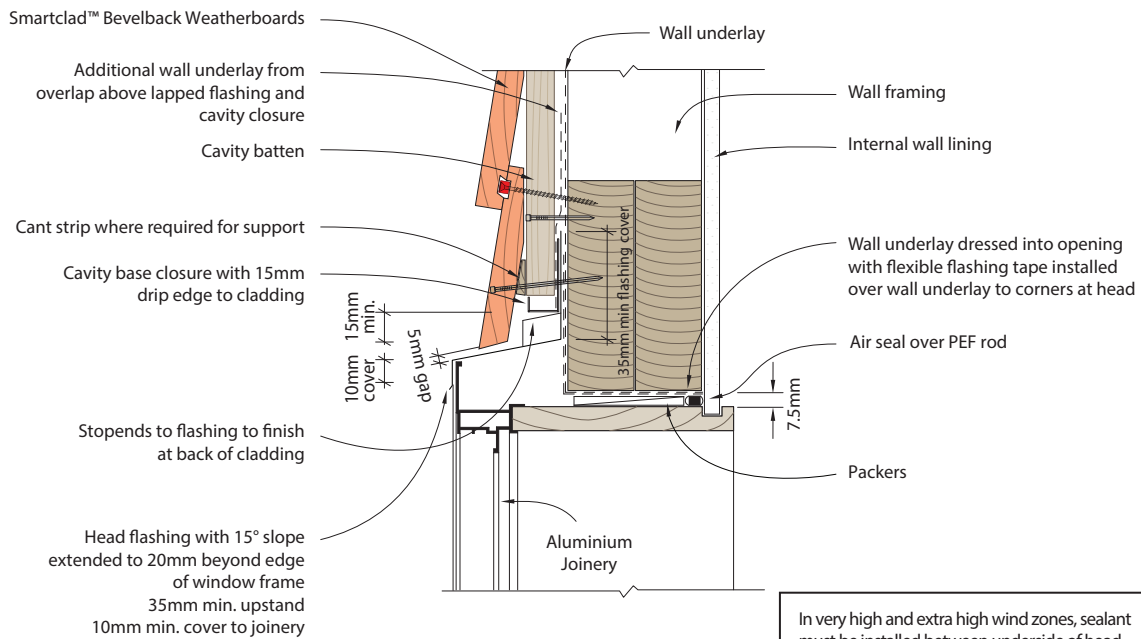
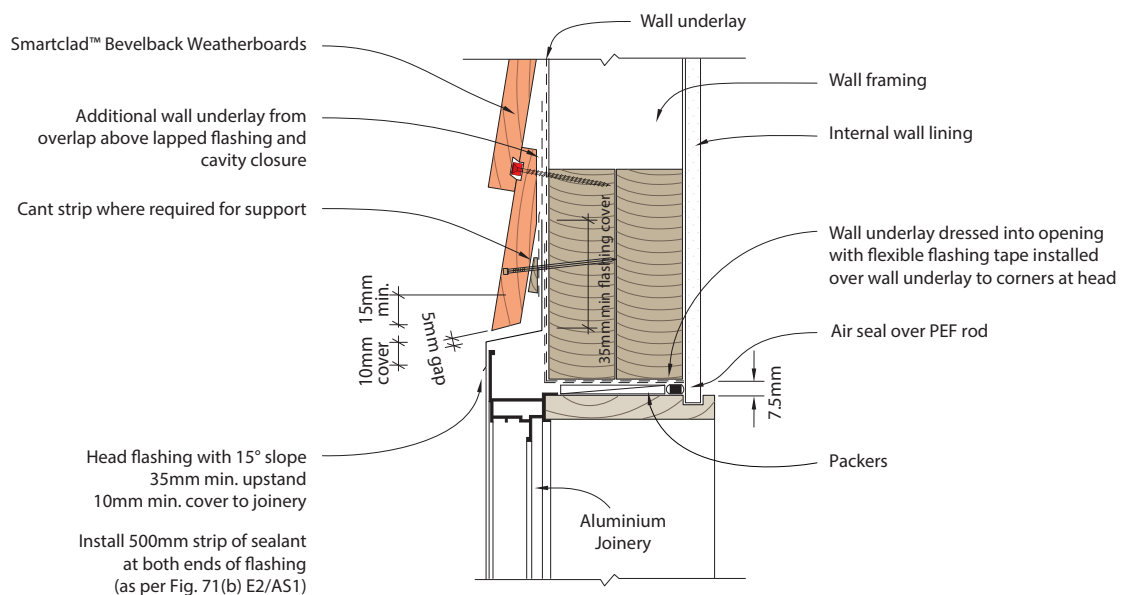


CAVITY FIX



In very high and extra high wind zones, sealant must be installed between underside of head flashing and top edge of window head flange. — see E2/AS1 Fig. 71(c)

DIRECT FIX



In very high and extra high wind zones, sealant must be installed between underside of head flashing and top edge of window head flange. — see E2/AS1 Fig. 71(c)