

# SMART'CLAD™

Your traditional  
timber  
weatherboard  
solution



## HIGH PERFORMANCE SMARTER FINISH



**PUREPINE**  
MOULDINGS

**PUKEPINE**  
SAW MILLS

0800 768 253  
[SmartClad.co.nz](http://SmartClad.co.nz)

# Key Features

Treatment and coatings

## LOSP H3.1 Treatment

- Proven treatment approved to NZ3602 standards
- Resistance to fungal decay and insect attack
- The ideal treatment when exacting dimensions of weatherboards are required

## Double Primed

- Two layers of premium alkyd (oil based) primer
- Machine coating system applying even film build across the whole board
- Proven paint technology giving peace of mind

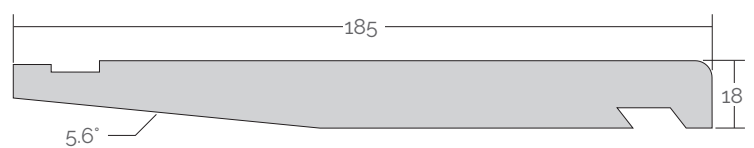
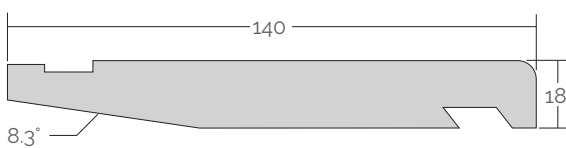
## Light Reflective Values (LRV)

Purepine Mouldings recommend choosing a colour with a LRV of 45 or higher for Smartclad Weatherboards.

The product warranty will be void if colours with a LRV less than 45 are used.



## Profile Dimensions

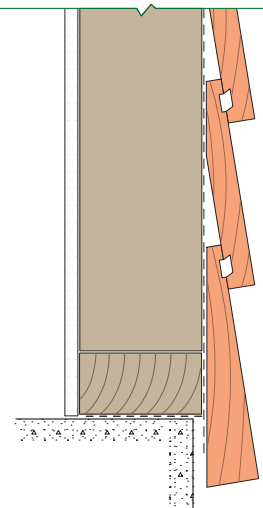


Available in handy 50 piece trade packs

## Start well with a SmartClad Starter Board

SmartClad starter boards make it easier to get the perfect job. No more guess work required.

- Position the starter board so that it overlaps the concrete base of foundation by at least 50 mm and confirm that the board is level with a laser or string line.
- Nail the starter board to the bottom plate of the framing 75 to 100mm up from the bottom base board.
- For best results, use a pre-shaped scribe as a set out guide to ensure the weatherboards line up with heads of windows.



# Storage, preparation and installation

- Ensure that SmartClad weatherboards are correctly stored and protected prior to installation.
- All weatherboards must be stored indoors or under a totally-weatherproof cover at all times.
- The wrap that protects SmartClad when it is delivered is only a shower-proof transit cover.
- It is not suitable for use as a weatherproof cover.
- To maintain board stability, it is recommended that you apply an undercoat of paint to each weatherboard before installation. Choose paint with a colour that has a light reflective value (LRV) of 45% or more.

- **Prior to Weatherboard Installation** — The flexible wall underlay (or rigid wall underlay) must be fitted in accordance with manufacturer's instructions. In particular it is essential that the underlay is dressed into the window/door opening, and the flashing tapes fitted to the jambs and sills and at the corners of the opening head.
- **Cavity Construction**
  - Where cavity construction is specified, cavity battens must be installed over the building wrap to the wall framing at maximum 600mm centres where the studs are at 600mm centres or at 400mm centres when studs are at 400mm centres. Refer to BRANZ Bulletin Number 475 for further information.
  - Where studs are at greater than 450mm centres, a building wrap support (e.g. polypropylene strap) must be installed over the building wrap at maximum 300 mm centres horizontally.
- **Cavity starter strips** — must be fitted to close off the cavity from vermin. The strip should be in accordance with NZBC Acceptable Solution E2/AS1 Paragraph 9.1.8.3.
- **Flashings** — where required, flashings such as corner, sill and saddle flashings must be installed prior to weatherboard installation.
- **Joining Weatherboards** — Fix weatherboards in full lengths where possible. Where joints are unavoidable, soakers are the preferred method however if soakers are not an option then scarf the weatherboard at 45° over a stud/cavity batten and fix with one nail fixing through the overlapping board. Prime the cut ends of all scarf joints with two coats of premium alkylid timber primer or Smartseal primer before fixing.
- **Fitting Window And Door Joinery** — Ideally, weatherboards should be fitted till the top of the opening is reached, then the joinery fitted. This allows for the boards to be fitted beneath the window flange and for the head flashing to be fixed over the window, then subsequent boards fixed over the head flashing.
- **Prime Cut Ends** — prior to fitting weatherboards or other timber trims, prime the cut ends with two coats of premium alkylid timber primer or Smartseal spray primer.

- **Nailing** — use 75 x 3.15mm hot-dip galvanised or stainless steel ring shank jolt head nails. The nail must be located 40mm above the bottom edge of the overlap board and be punched a maximum of 2mm below the surface of the board. Start fixing the weatherboards at the middle of their length and work outwards to the ends. Pre-drill all nail fixings within 50mm of the end of the board.
- **External Corners** — are finished by either using the SmartClad™ box corners or SmartClad™ corner soakers.
- **Internal Corners** — are finished by either scribing and notching alternate weatherboards or the SmartClad™ Internal Corner Scribe can be fitted.
- **Facings** — After the joinery and weatherboards are installed, the jambs of the window are finished with either a SmartClad™ Pre-Scribed Scribe or Pre-Scribed Facings.
- **SmartClad™ Sill** — is an optional timber sill board that can be fixed to the sill of windows for aesthetic purposes.
- **Eaves Moulding** — is a cover trim to finish the junction between the top of the wall and the soffit.
- **Air Seals** — A nominal 5 to 10mm gap must be left between the joinery reveal and the framing. A PEF backing rod is inserted and the gap sealed with a self-expanding polyurethane foam or sealant, in accordance with NZBC Acceptable Solution E2/AS1 Paragraph 9.1.6.
- **Finishing** — Prior to painting the boards must be cleaned down, and any nail holes filled. The paint coating manufacturer's instructions must be followed at all times for application of the paint finish. SmartClad™ Bevelback weatherboards must be painted as soon as practicable following fixing. The use of a high quality acrylic top coat is advised. **Ensure a minimum of 150 wet microns is applied.**

All exposed faces, including top edges at sills and all bottom edges of SmartClad™ weatherboards and accessories must be finished with at least two coats of an exterior grade latex acrylic paint complying with any of Parts 7, 8, 9 or 10 of AS 3730. If SmartClad™ weatherboards are exposed to the weather for more than 45 days, they must be re-primed with one coat of alkylid primer prior to the application of the finishing coats. The recommended drying time between coats and the temperature limitations for application must be followed.







## Smartclad Accessories

Product	Code	Size	Length
Starter Board	SB140	140mm x 34mm	6.0 metres
Starter Board	SB185	185mm x 32mm	6.0 metres
Bevelback Weatherboard	BBW140	140mm x 18mm	6.0 metres
Bevelback Weatherboard	BBW185	185mm x 18mm	6.0 metres
Pre-shaped Scribe	SPS140	40mm x 10mm	5.4 metres
Pre-shaped Scribe	SPS140	40mm x 18mm	5.4 metres
Pre-shaped Scribe	SPS185	40mm x 10mm	5.4 metres
Pre-shaped Scribe	SPS185	40mm x 18mm	5.4 metres
Pre-shaped Facing	SPF140	88mm x 34mm or 42mm x 34mm	5.4 metres
Pre-shaped Facing	SPF185	88mm x 34mm or 42mm x 34mm	5.4 metres
Pre-shaped Box Corner (Male)	SCBC	88mm x 18mm	5.4 metres
Pre-shaped Box Corner (Female)	SCBC	100mm x 18mm	5.4 metres
SmartClad Sill	SCS	55mm x 42mm	5.4 metres
Internal Corner Board	SISCS	40mm x 40mm	5.4 metres
Flat Soaker Galv.	FSG	140mm or 185mm	25 per box
Corner Soaker Galv.	CSG	140mm or 185mm	25 per box



As part of our Smartclad™ weatherboard solution, our weatherboards are CodeMark certified for your peace of mind.

**SMARTCLAD™**

PO Box 41, Te Puke 3153, New Zealand **P** +64 7 573 9161 **F** +64 7 573 4189

[SmartClad.co.nz](http://SmartClad.co.nz)